

Shok-Lok MAX

Shok-Lok MAX combines the industry leading durability of recycled re-vulcanized rubber with an innovative "waffle bottom" design to create a surface perfect for intense heavy lifting environments. Modern facilities need the flexibility to utilize every square inch of space. Shok-Lok MAX makes that possible with wall-to-wall installations of a heavy duty $\frac{3}{4}$ " tiles that offer an amazing 56 IIC rating and superior shock and noise absorption. Shok-Lok MAX uses TreadSafe technology to provide a safe and stable surface that actually increases its anti-slip properties in wet conditions. Speaking of safety, Shok-Lok MAX has a 100% closed cell structure that will never absorb bacteria or viral material. Shok-Lok MAX is made in the U.S.A. from 100% recycled rubber and is backed by a 5 year manufacturer warranty.

Shok-Lok has the same impact and noise abatement properties in a 2'x4' 12mm ($\frac{1}{2}$ ") center "drop zone" tile that works with the MASS system.



- IIC Rating 56
- Durable 12mm & 18mm($\frac{1}{2}$ " & $\frac{3}{4}$ ") Construction
- Commercial Quality
- Single Station or Entire Facility
- 100% Re-Vulcanized Recycled Rubber
- 5 Standard Colors

WHERE TO USE:

Gyms
Health & Community Centers
Schools
Weight Rooms
Upper Floors Needing Noise Abatement

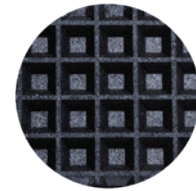
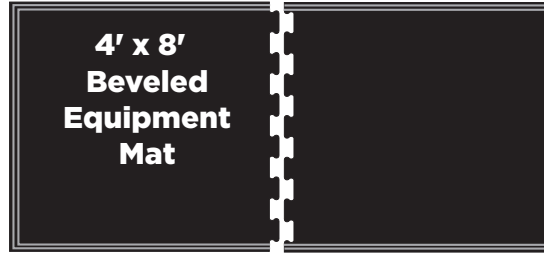
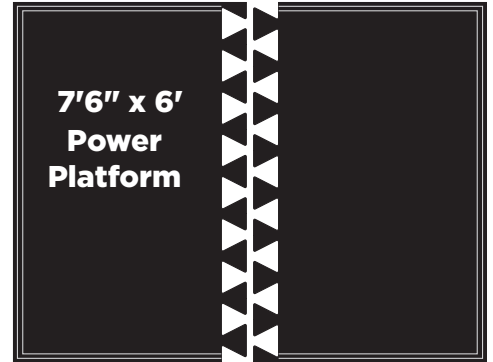
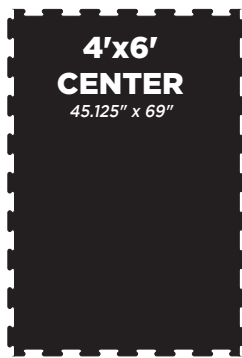


Safety Level 3 indicates a closed cell anti-bacterial/anti-microbial product that is non-absorbent and repels moisture and prevents mold growth.

SafeStep



Diamond top pattern texture provides maximum traction in wet and dry conditions



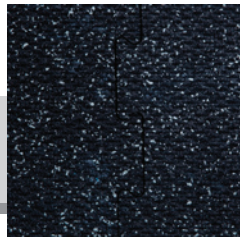
WAFFLE
BOTTOM DESIGN



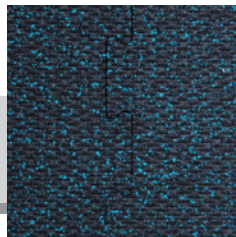
MAT COLORS 4'x6' Center Tiles - Custom colors available for orders over 500 sq/ft



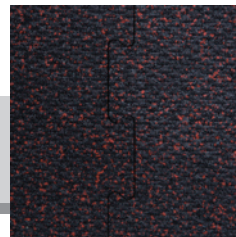
BLACK



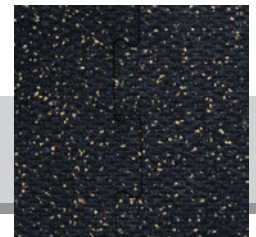
GREY



BLUE



RED



TAN



- 2'x4' - 12mm (1/2") & 18mm (3/4") Tiles
- Integrates Perfectly with RecLok Sport & RecLok MAX Tiles
- Waffle Bottom Design
- 100% Re-Vulcanized Recycled Rubber

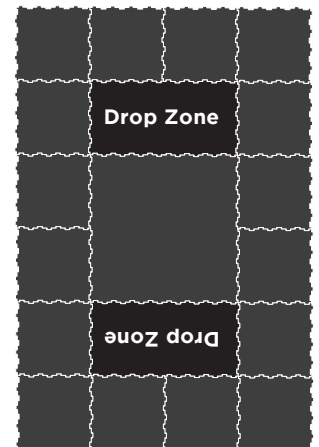


BLACK



Dimensions
2x4 = 22.5 x 45

Sqft
2x4 = 7.04



ADDITIONAL 4' EDGES AVAILABLE



OPTIONAL 4' BEVELED EDGES AVAILABLE

